

Sci-Map Site

UF Astronomy Teaching Observatory

Name of Activity

Make A Starfinder

Before, While, or After?

Before You Go

Materials

See Attached PDF

This activity was copied from the following archived NASA webpage <https://spaceplace.nasa.gov/starfinder/en/>

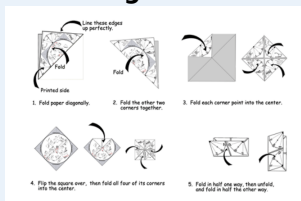
Procedure

Print out the PDF starfinder for the month of the year in which you wish to observe the stars. Follow the directions for how to fold the starfinder. The directions are also in the PDF.

The Science Behind It

Our Earth rotates on its axis and revolves around the Sun. The stars that we see in the sky at night are therefore always changing as we can only see them in the evening (when the sun is not shining so bright that the other, less bright, stars are too hard to see). We also see different parts of the universe as we travel around the sun. So each month we will see a slightly different night sky.

Post Image



How to Fold the Star Finder

Supporting File 1 - Printable templates or additional information

- [Star_Finder_Instructions_and_All_Months1.pdf](#)

Submitted by:

Hands On Gainesville (from NASA archived files)

Email

HandsOnGainesville@gmail.com

